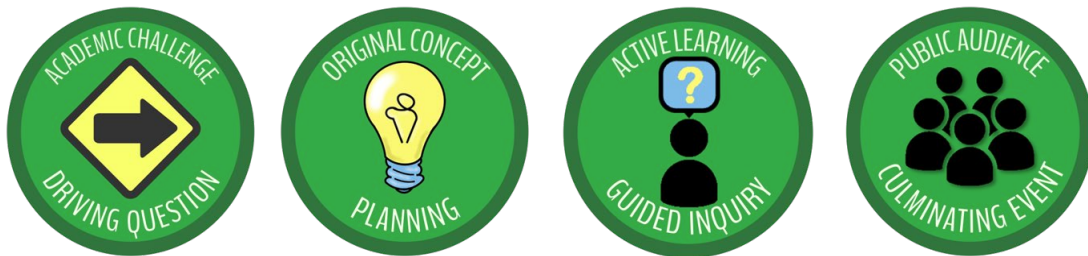


Making the Shift: Foundations of Project-Based Learning

Description

Making the Shift: Foundations of Project-Based Learning is an introductory-level professional learning (PL) opportunity to support educators in developing the knowledge and skills needed to begin shifting their instruction to a Project-Based Learning (PjBL) approach. The Agency of Education (AOE) designed this PL to support educators of all content areas, instructional coaches, curriculum directors, and others with learning essential elements and strategies for designing effective units for their contexts. The five-session series facilitated by the AOE culminated in individually or collaboratively written PjBL unit plans.



Foundations of Project-Based Learning operated within a framework of four key components of the approach identified as essential by Vermont educators. These included (1) a driving question anchored in academic content, (2) a student planned original concept that responds to the challenge, (3) active learning and guided inquiry opportunities, and (4) a culminating task or product that is presented to a public audience.

Participant Response

Participants noted major shifts in perceptions and practice, stating the PL “re-shaped [their] understanding of student-centered learning” and “helped [them] think about being intentional with making lessons relevant to kids.” Many referenced the information, structure, sequencing, expertise, and collaborative support as helpful elements of the series. One participant stated “the specifics of how you all presented the shared information was so on point. It was a pleasure to participate in a learning experience that reflected how we were being taught to teach. The way that the shared conversations were prompted, the visuals, everything about the course was really engaging.”

Facilitating Project-Based Learning PL

The AOE’s PjBL PL focused on the elements described in this document. Educators interested in delivering their own PL and supporting teachers with designing PjBL experiences can review more information and resources in the AOE’s [Foundations of PjBL Facilitation Guide](#).

Contact Information:

If you have questions about this document or would like additional information please contact: Kyle Anderson, Student Pathways Division, at kyle.anderson@vermont.gov