

# Disaggregated DRA Results

## Spring 2008

Mary Hogan School (PS179) - Addison Central S.U.

|                                     | School |         |         |         |         |         | State  |         |         |         |         |         |
|-------------------------------------|--------|---------|---------|---------|---------|---------|--------|---------|---------|---------|---------|---------|
|                                     | Tested | Level 5 | Level 4 | Level 3 | Level 2 | Level 1 | Tested | Level 5 | Level 4 | Level 3 | Level 2 | Level 1 |
| <b>All Students</b>                 |        |         |         |         |         |         |        |         |         |         |         |         |
| All Students                        | 60     | 63%     | 23%     | 5%      | 5%      | 3%      | 6150   | 51%     | 33%     | 9%      | 4%      | 3%      |
| <b>Primary Race/Ethnicity</b>       |        |         |         |         |         |         |        |         |         |         |         |         |
| American Indian or Alaskan Native   | 0      | 0%      | 0%      | 0%      | 0%      | 0%      | ++     | ++      | ++      | ++      | ++      | ++      |
| Asian                               | ++     | ++      | ++      | ++      | ++      | ++      | 86     | 56%     | 30%     | 9%      | 1%      | 3%      |
| Black or African American           | 0      | 0%      | 0%      | 0%      | 0%      | 0%      | 103    | 30%     | 40%     | 18%     | 5%      | 7%      |
| Hispanic or Latino                  | ++     | ++      | ++      | ++      | ++      | ++      | 78     | 51%     | 27%     | 10%     | 6%      | 5%      |
| Native Hawaiian or Pacific Islander | 0      | 0%      | 0%      | 0%      | 0%      | 0%      | ++     | ++      | ++      | ++      | ++      | ++      |
| White (non-Hispanic)                | ++     | ++      | ++      | ++      | ++      | ++      | 5766   | 52%     | 33%     | 9%      | 4%      | 3%      |
| No Primary Race/Ethnicity           | 0      | 0%      | 0%      | 0%      | 0%      | 0%      | 112    | 43%     | 38%     | 14%     | 3%      | 3%      |
| <b>Gender</b>                       |        |         |         |         |         |         |        |         |         |         |         |         |
| Male                                | 32     | 56%     | 31%     | 6%      | 0%      | 6%      | 3179   | 47%     | 35%     | 10%     | 4%      | 4%      |
| Female                              | 28     | 71%     | 14%     | 4%      | 11%     | 0%      | 2971   | 55%     | 31%     | 8%      | 3%      | 2%      |
| <b>LEP Status</b>                   |        |         |         |         |         |         |        |         |         |         |         |         |
| Currently receiving LEP services    | 0      | 0%      | 0%      | 0%      | 0%      | 0%      | 153    | 30%     | 38%     | 19%     | 6%      | 7%      |
| LEP All Other Students              | 60     | 63%     | 23%     | 5%      | 5%      | 3%      | 5997   | 52%     | 33%     | 9%      | 4%      | 3%      |
| <b>IEP</b>                          |        |         |         |         |         |         |        |         |         |         |         |         |
| Students with an IEP                | ++     | ++      | ++      | ++      | ++      | ++      | 650    | 12%     | 30%     | 21%     | 19%     | 19%     |
| IEP All Other Students              | ++     | ++      | ++      | ++      | ++      | ++      | 5500   | 56%     | 34%     | 8%      | 2%      | 1%      |
| <b>SES</b>                          |        |         |         |         |         |         |        |         |         |         |         |         |
| Economically Disadvantaged Students | 26     | 42%     | 31%     | 12%     | 8%      | 8%      | 2094   | 36%     | 38%     | 13%     | 7%      | 5%      |
| SES All Other Students              | 34     | 79%     | 18%     | 0%      | 3%      | 0%      | 4056   | 59%     | 31%     | 7%      | 2%      | 2%      |

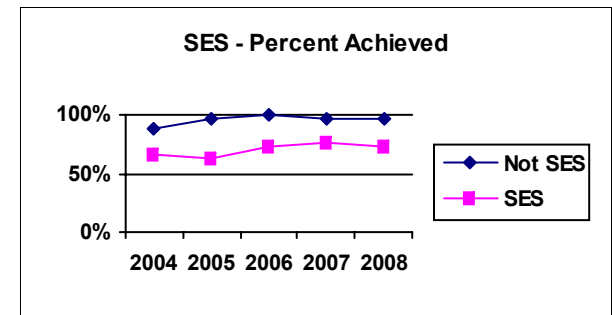
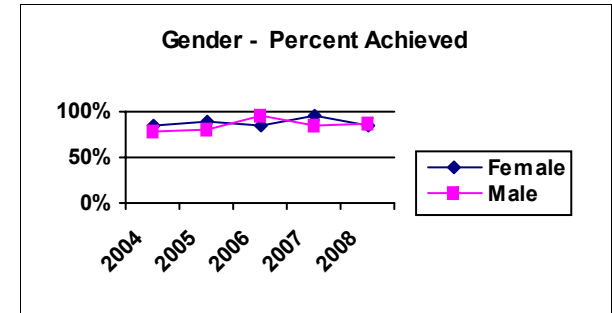
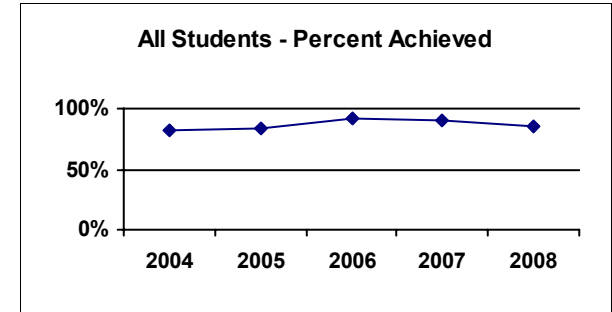
Level 5 = Achieved the Standard with Honors  
Level 2 = Below the Standard

Level 4 = Achieved the Standard

Level 3 = Nearly Achieved the Standard

Level 1 = Little or No Evidence of Achievement

++ = Data suppressed to protect student confidentiality



No graph data for a year indicates no results for that year - OR- data suppressed to protect student confidentiality