

Disaggregated DRA Results

Spring 2008

Northwest Primary School (PS256) - Rutland City S.D.

| | School | | | | | | State | | | | | |
|-------------------------------------|--------|---------|---------|---------|---------|---------|--------|---------|---------|---------|---------|---------|
| | Tested | Level 5 | Level 4 | Level 3 | Level 2 | Level 1 | Tested | Level 5 | Level 4 | Level 3 | Level 2 | Level 1 |
| All Students | | | | | | | | | | | | |
| All Students | 84 | 42% | 38% | 11% | 5% | 5% | 6150 | 51% | 33% | 9% | 4% | 3% |
| Primary Race/Ethnicity | | | | | | | | | | | | |
| American Indian or Alaskan Native | 0 | 0% | 0% | 0% | 0% | 0% | ++ | ++ | ++ | ++ | ++ | ++ |
| Asian | 0 | 0% | 0% | 0% | 0% | 0% | 86 | 56% | 30% | 9% | 1% | 3% |
| Black or African American | 0 | 0% | 0% | 0% | 0% | 0% | 103 | 30% | 40% | 18% | 5% | 7% |
| Hispanic or Latino | ++ | ++ | ++ | ++ | ++ | ++ | 78 | 51% | 27% | 10% | 6% | 5% |
| Native Hawaiian or Pacific Islander | 0 | 0% | 0% | 0% | 0% | 0% | ++ | ++ | ++ | ++ | ++ | ++ |
| White (non-Hispanic) | ++ | ++ | ++ | ++ | ++ | ++ | 5766 | 52% | 33% | 9% | 4% | 3% |
| No Primary Race/Ethnicity | ++ | ++ | ++ | ++ | ++ | ++ | 112 | 43% | 38% | 14% | 3% | 3% |
| Gender | | | | | | | | | | | | |
| Male | 48 | 42% | 40% | 8% | 4% | 6% | 3179 | 47% | 35% | 10% | 4% | 4% |
| Female | 36 | 42% | 36% | 14% | 6% | 3% | 2971 | 55% | 31% | 8% | 3% | 2% |
| LEP Status | | | | | | | | | | | | |
| Currently receiving LEP services | ++ | ++ | ++ | ++ | ++ | ++ | 153 | 30% | 38% | 19% | 6% | 7% |
| LEP All Other Students | ++ | ++ | ++ | ++ | ++ | ++ | 5997 | 52% | 33% | 9% | 4% | 3% |
| IEP | | | | | | | | | | | | |
| Students with an IEP | 17 | 18% | 35% | 6% | 18% | 24% | 650 | 12% | 30% | 21% | 19% | 19% |
| IEP All Other Students | 67 | 48% | 39% | 12% | 1% | 0% | 5500 | 56% | 34% | 8% | 2% | 1% |
| SES | | | | | | | | | | | | |
| Economically Disadvantaged Students | 49 | 35% | 41% | 10% | 8% | 6% | 2094 | 36% | 38% | 13% | 7% | 5% |
| SES All Other Students | 35 | 51% | 34% | 11% | 0% | 3% | 4056 | 59% | 31% | 7% | 2% | 2% |

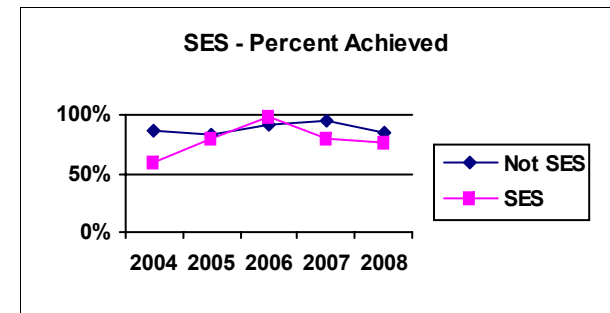
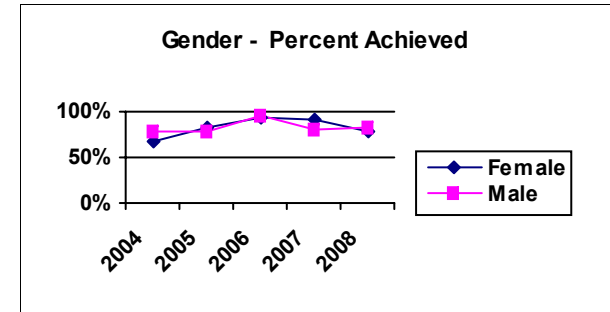
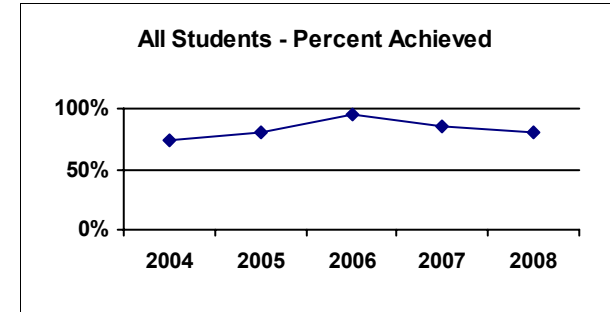
Level 5 = Achieved the Standard with Honors
Level 2 = Below the Standard

Level 4 = Achieved the Standard

Level 3 = Nearly Achieved the Standard

Level 1 = Little or No Evidence of Achievement

++ = Data suppressed to protect student confidentiality



No graph data for a year indicates no results for that year - OR- data suppressed to protect student confidentiality