

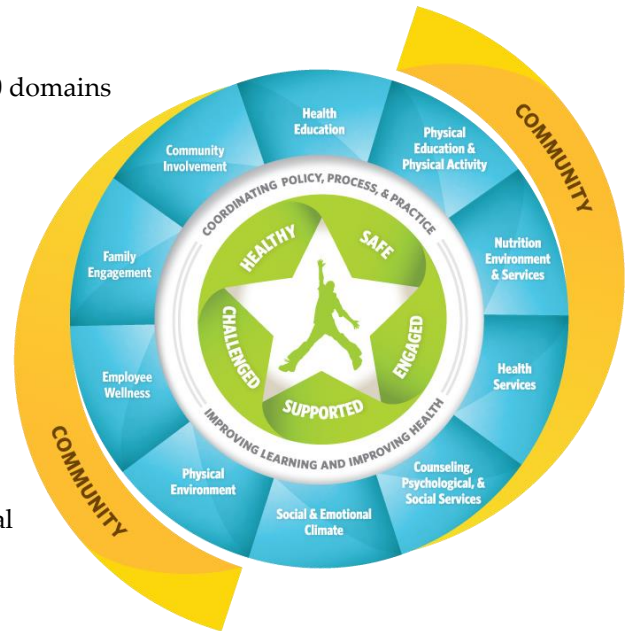
Whole School, Whole Community, Whole Child

Vermont Department of Health and Agency of Education

The Centers for Disease Control and Prevention (CDC) and ASCD have partnered to create the Whole School, Whole Community, Whole Child (WSCC) model. This enhanced model builds upon aspects of the CDC's familiar Coordinated School Health (CSH) model and the Whole Child framework from the ASCD.

The WSCC Model:

- Expands upon the 8 domains of the CSH model into the 10 domains shown in this graphic
- Combines the CSH model with the ASCD's Whole Child framework
- Demonstrates integration of health and education to improve academic achievement
- Promotes increased alignment, integration, and collaboration between health and education in order to achieve improved cognitive, physical, social, and emotional development



Both the Vermont Department of Health (VDH) and Agency of Education (AOE) are committed to promoting use of the WSCC model by their school and community partners to improve population health and academic achievement outcomes. The VDH and AOE recommends using the WSCC model to achieve goals outlined in school continuous improvement plans and school wellness policies, and integrating it into a multi-tiered system of supports (MTSS).

As updated or new tools become available from the CDC and ASCD, they will be promoted and distributed to schools in a consistent and coordinated manner by the Health Department and the Agency of Education. We encourage you to visit the CDC and ASCD websites for more information (see below).

For more information:

Centers for Disease Control and Prevention:

- <http://www.cdc.gov/healthyyouth/wsc/index.htm>
- <http://www.cdc.gov/healthyyouth/images/schoolhealth/wscmodel.png> (graphic above) ASCD
- <http://www.ascd.org/programs/learning-and-health/wsc-model.aspx>
- <http://www.ascd.org/ASCD/pdf/siteASCD/publications/wholechild/wsc-a-collaborative-approach.pdf>