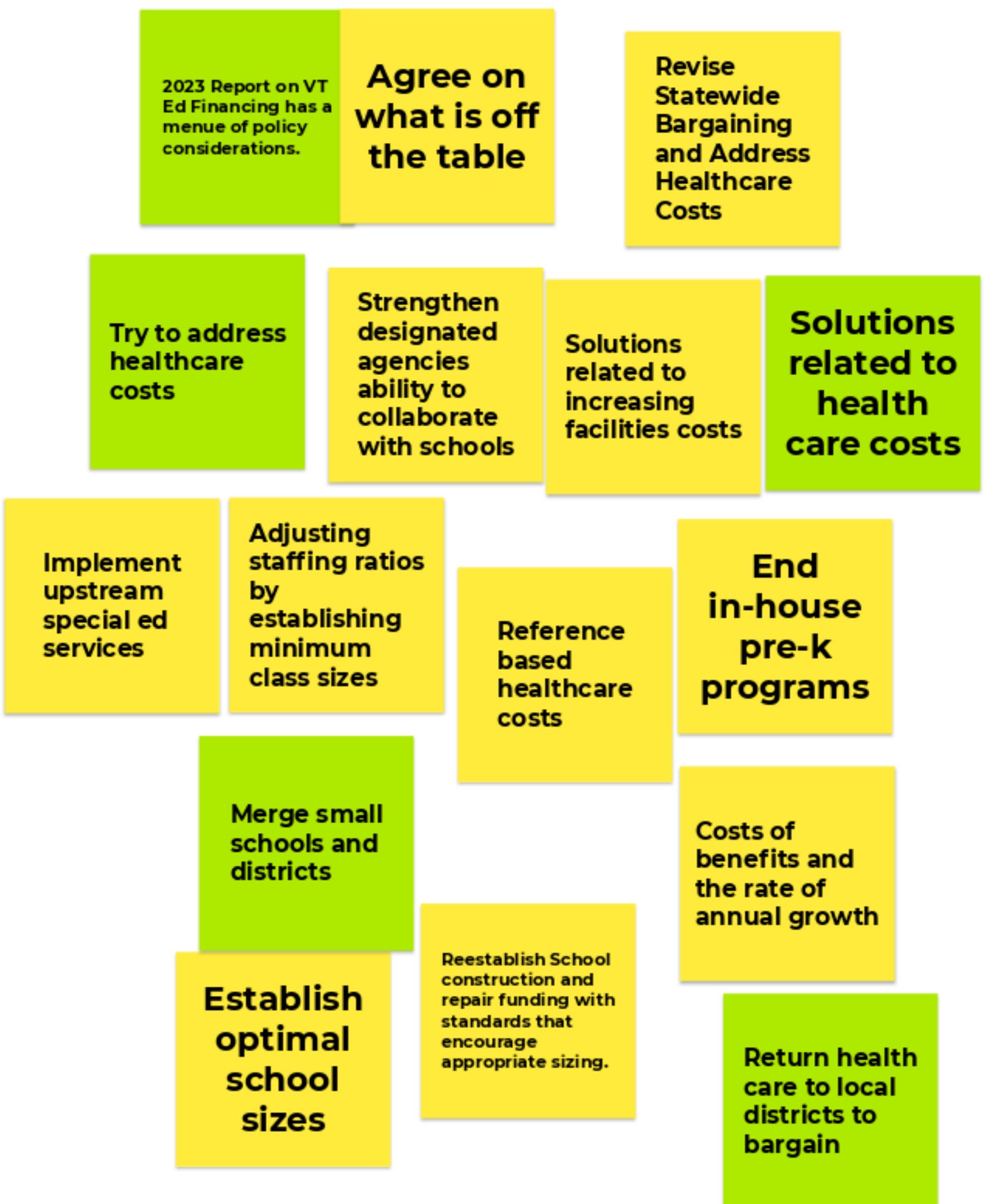
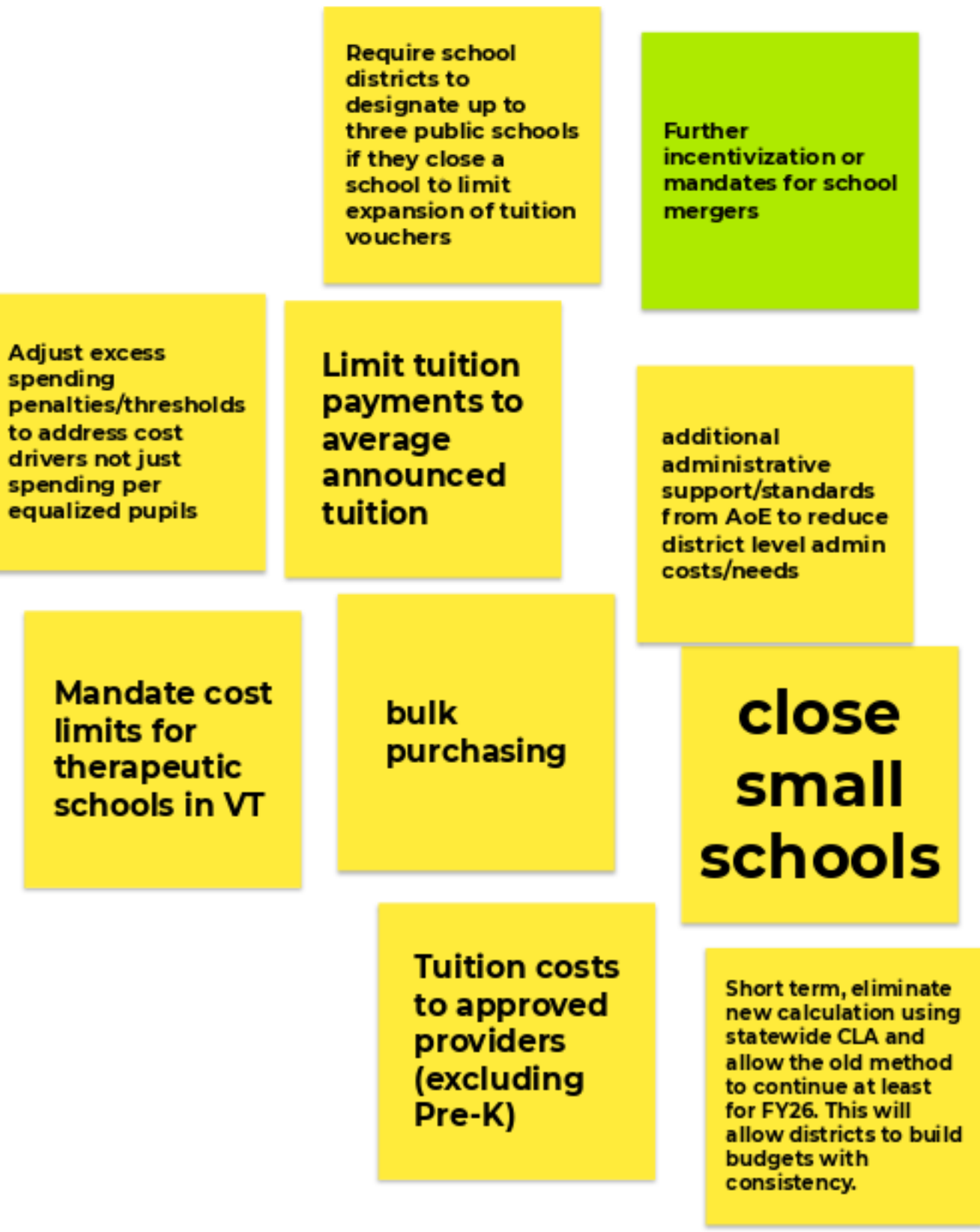


Policy Ideas to Control Cost Drivers



Policy Ideas to Reduce Property Tax Rates

Move expenses not within the control of local districts outside of the Education Fund - Education Fund only used to support "education spending".

Add a statutory requirement for new programs and mandates to have a sustainable funding source, other than the ed fund and raising costs on local district budgets.

Diversify revenue sources for the Ed Fund to ensure alignment with national average of state support for school budgets

Set clear targets for appropriate per pupil spending and set education fund incentives to meet that best practice

Expand sales tax to services

Property tax surcharge on second homes

Add more revenue

Property tax credit reforms

Address Staff to Student ratios and class size minimums in the Education Quality standards to help districts come into alignment and reduce costs.

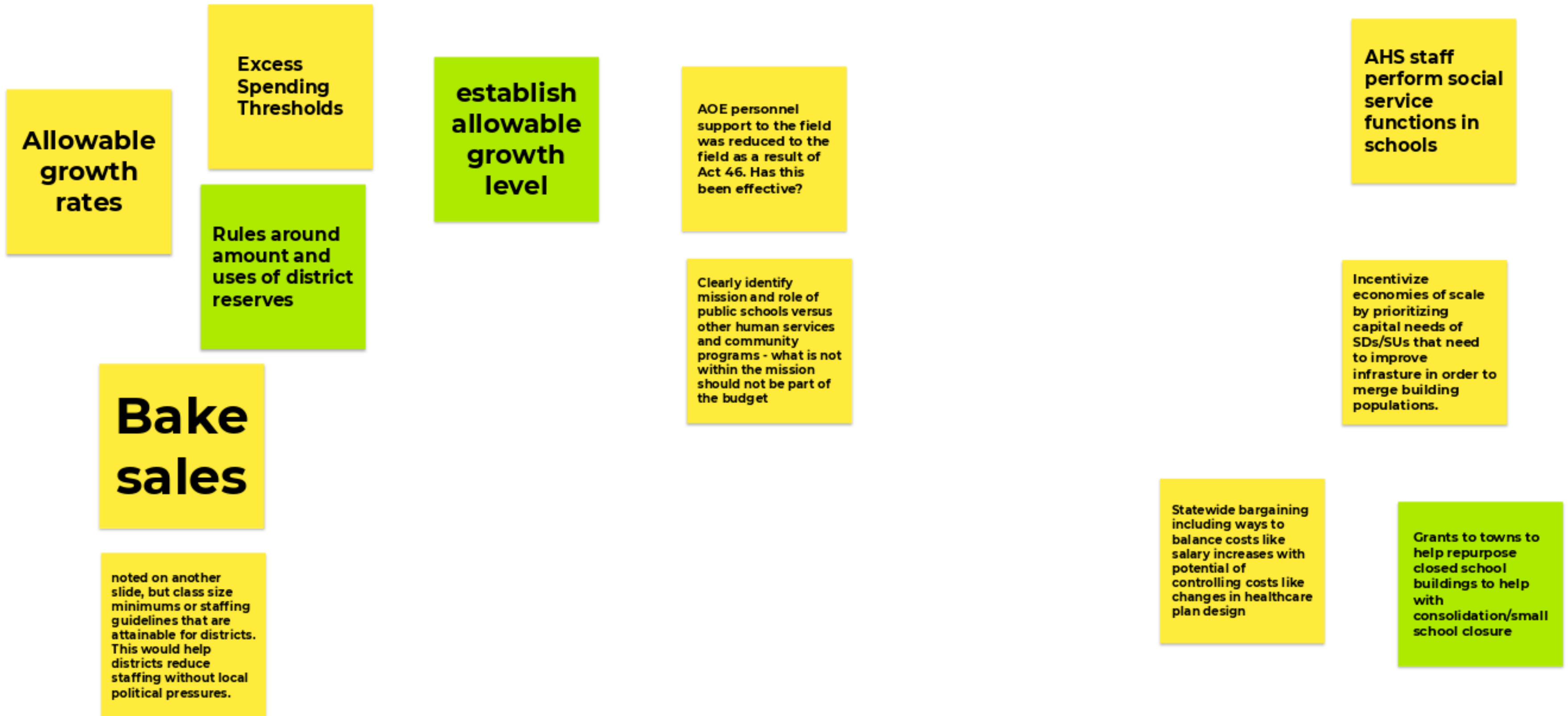
Better tie local votes of reduced local spending to district tax rate reductions

Ed Funding formula changes to try to mitigate impacts/incentives that lead to higher spending in the system as a whole

Tax millionaires

Go to income based tax for Education

Policy Ideas to Reduce District Spending



Data Desires

How do FY24 costs line up with the historical trends?

Growth of mental health costs like behavior interventionists as overall increase in SD/SU percental costs

As discussed, seeing data of overall spending by object and function in percentages, but also helpful to just see General Fund Expenses in this same way.

How much in ESSER funds did VT get by year? When was the money spent/on what? What was the breakdown between ongoing and one-time?

Breakdown of tuition expenses

Consultant on national picture of state revenues funding education

How do we measure the impact on the Education Fund beyond cost per pupil? Larger districts may spend less per pupil but their draw from the Education Fund is very large.

How do spending trends differ in districts with a variety of demographics and spending levels?

Determine what percentage in increased personnel costs is related to implementation of Act 173

Tuition Expenses

Interested in the breakdown of percentages of Ed fund spending similar to the work done on revenues.

A better understanding of how CLA has impacted a diverse selection of towns in the state.

What does research say on optimal school sizes?

Ideas to Increase Equity

**Funding
formula
reform**

Examine the floor and ceiling of the current formula: some districts that should benefit from Act 127 are not realizing the changes and are spending well below equitable levels

